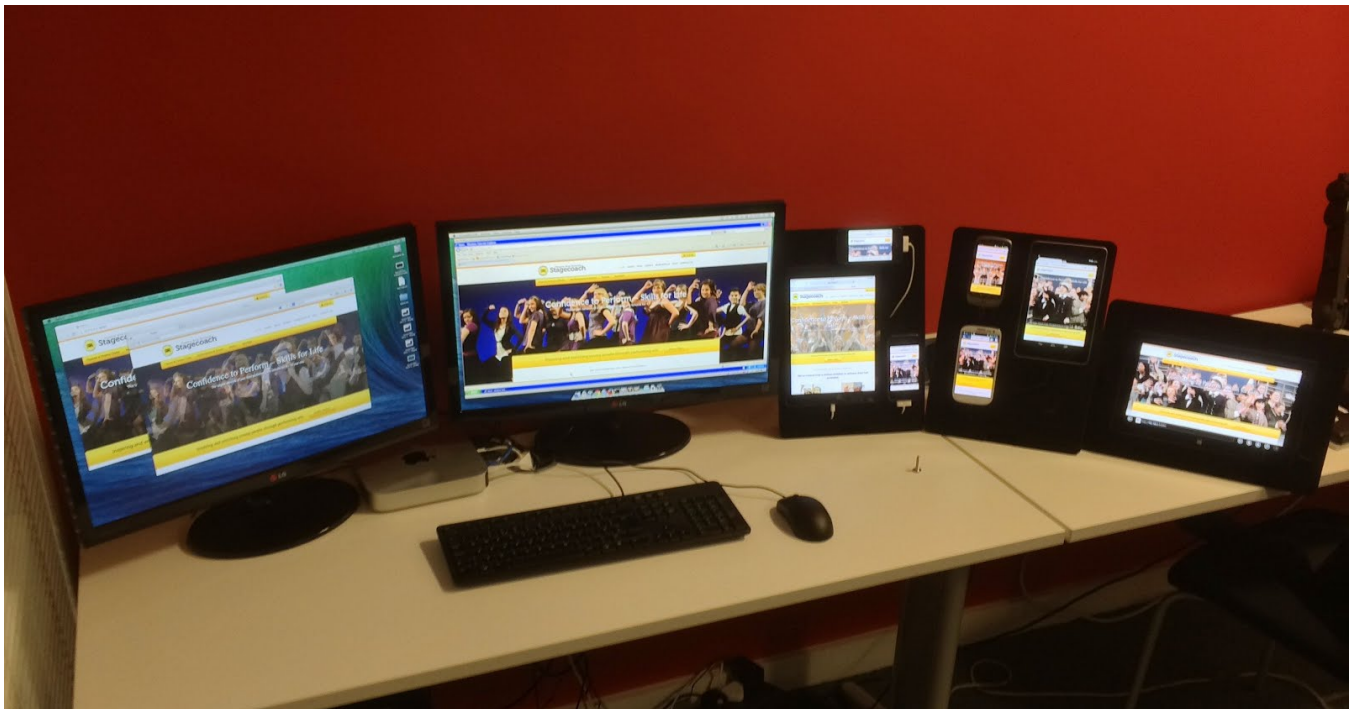


Testing Suite

As some of you may have noticed the Batcaves' Testing Suite has been implemented and thanks to some volunteers, beta tested.

What is it?

The TS is simply a collection of mobile devices connected to a proxy server (the Mac Mini), that allows a user to manipulate a single device and see those replicate across each of the other devices, which means you can quickly see your site across multiple browsers in their native environments.



Why should I use it?

As we move more towards responsive/mobile design and possibly even 'mobile first', it will become all the more important to test our work across as many devices as possible, the testing suite will help us do this even beyond the requirements of the client.

What devices/browsers are supported?

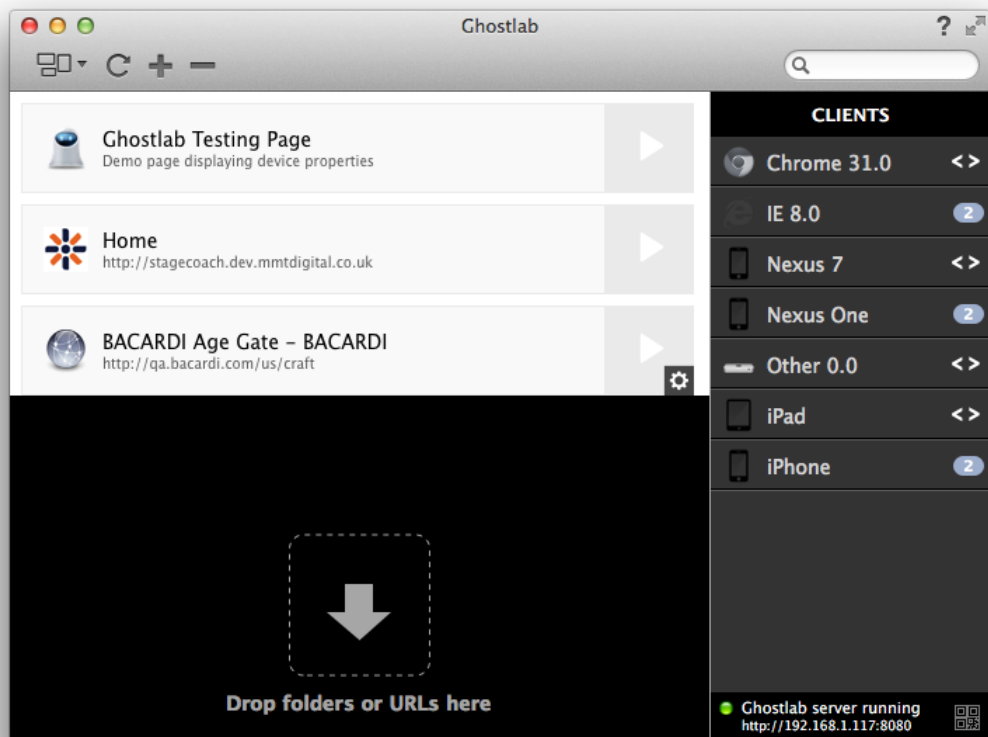
- iOS
 - iPod (non-retina)
 - iPhone 4s (retina)
 - iPad Air
- Windows
 - Microsoft Surface RT
- Android

- Samsung Galaxy S3
- Samsung Nexus 7
- Google Nexus One
- Browsers
 - IE 6, 7, 8, 9, 10, 11 (Via Virtual Images)
 - Chrome
 - Firefox
 - Safari

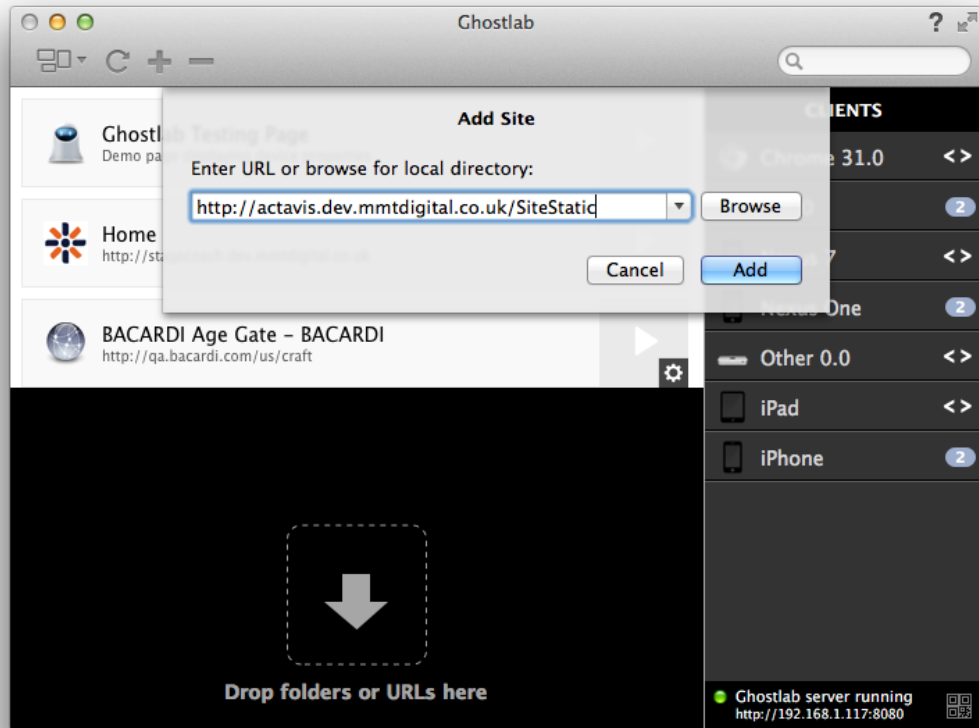
How do I use it?

Browsing to a site:

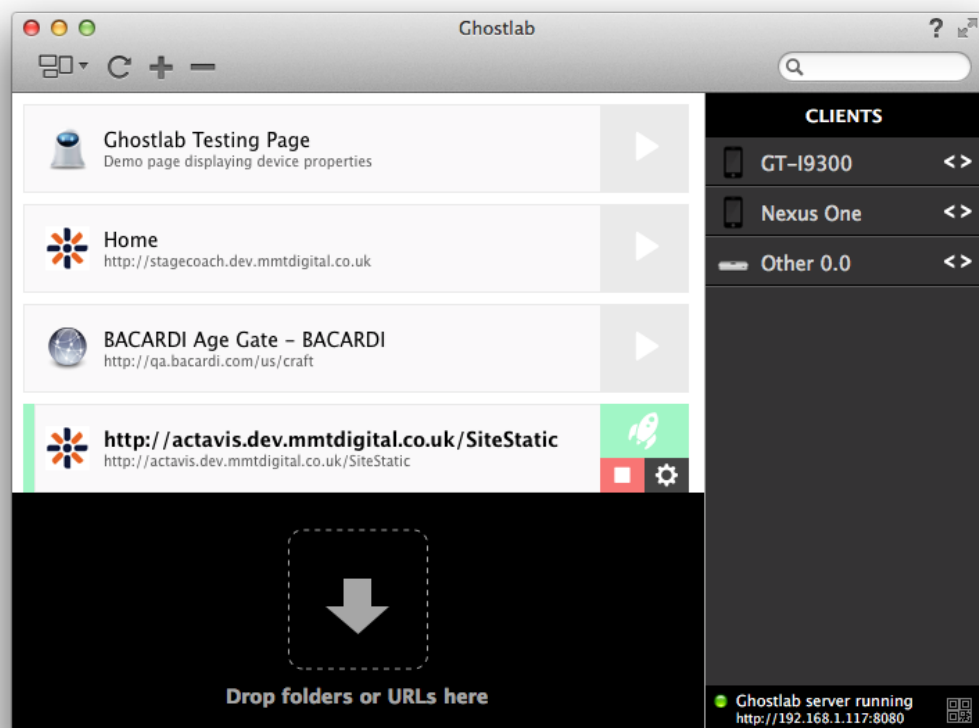
1. Open up GhostLab



2. Create a 'site' and click start



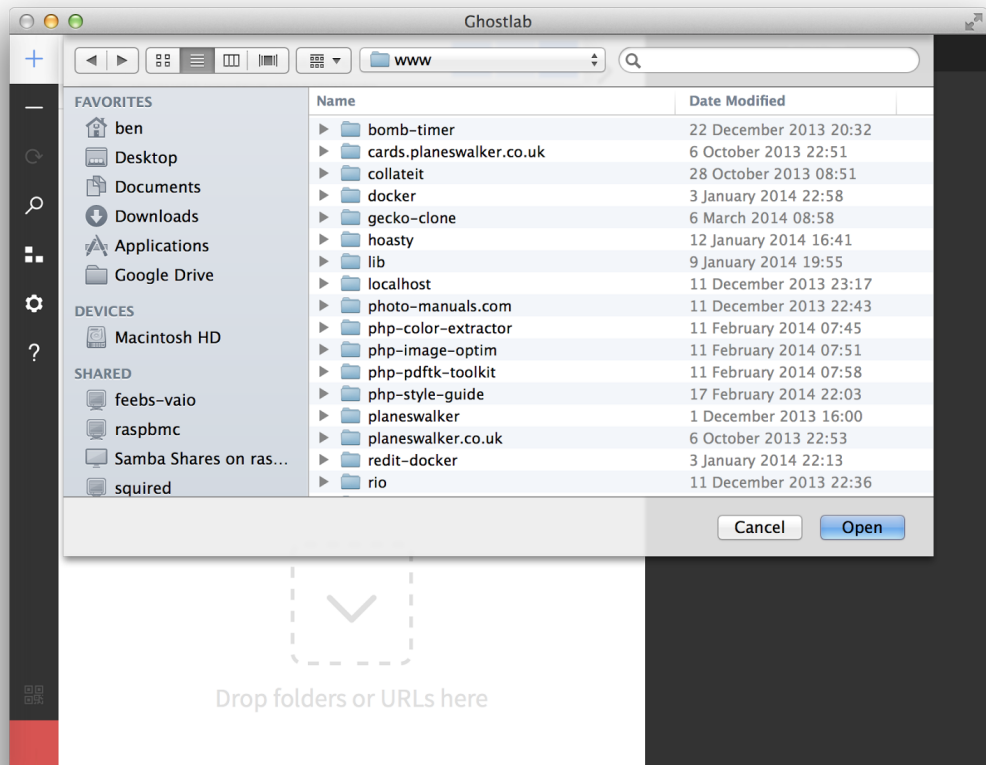
3. Make sure each device is pointing at **192.168.2.1**, manually or clicking on the link on the devices home screen (or if you're in a virtual machine, point it at **10.0.2.2**)



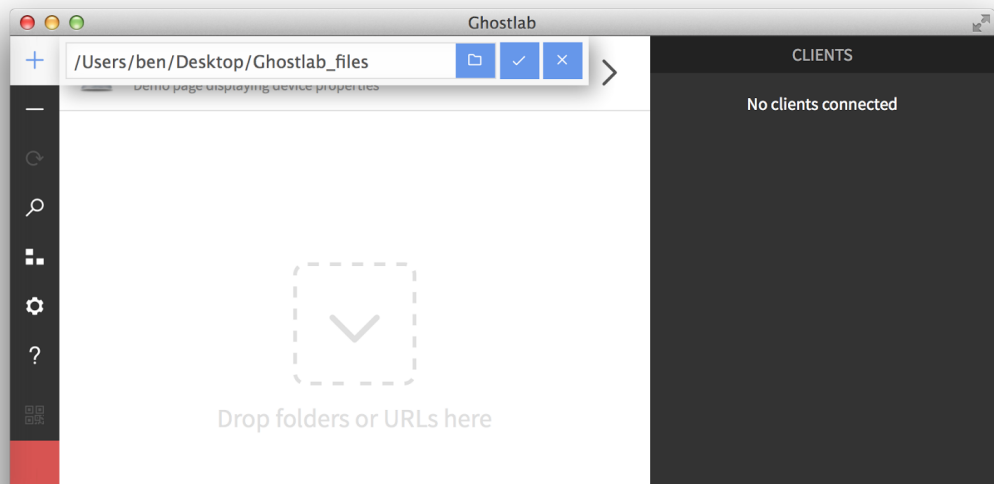
4. Navigate the site on one of the devices to see the changes replicated across each of the others

Browsing a folder

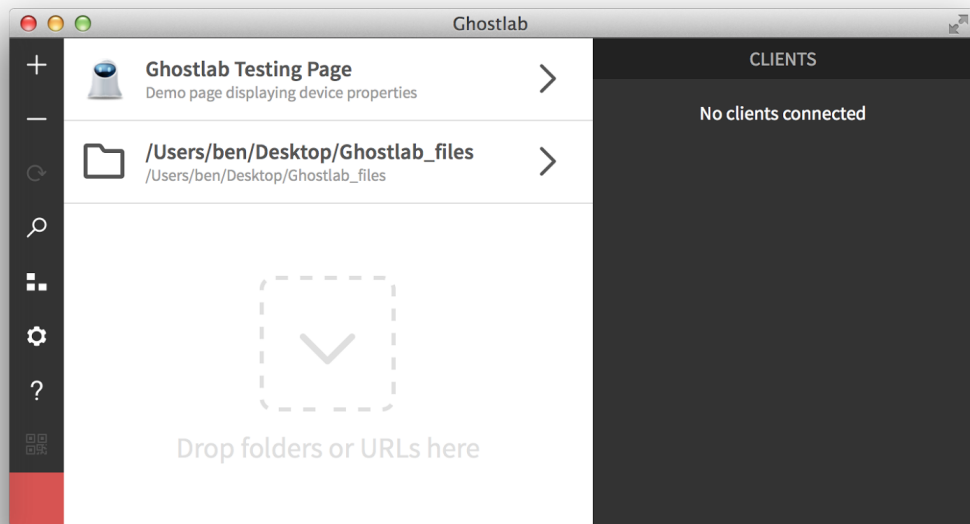
1. Select the '+' option and navigate to the root site folder



2. Click open and confirm your selection by clicking on the 'tick'



3. Expand the server folder '>' and click the play symbol to start the server

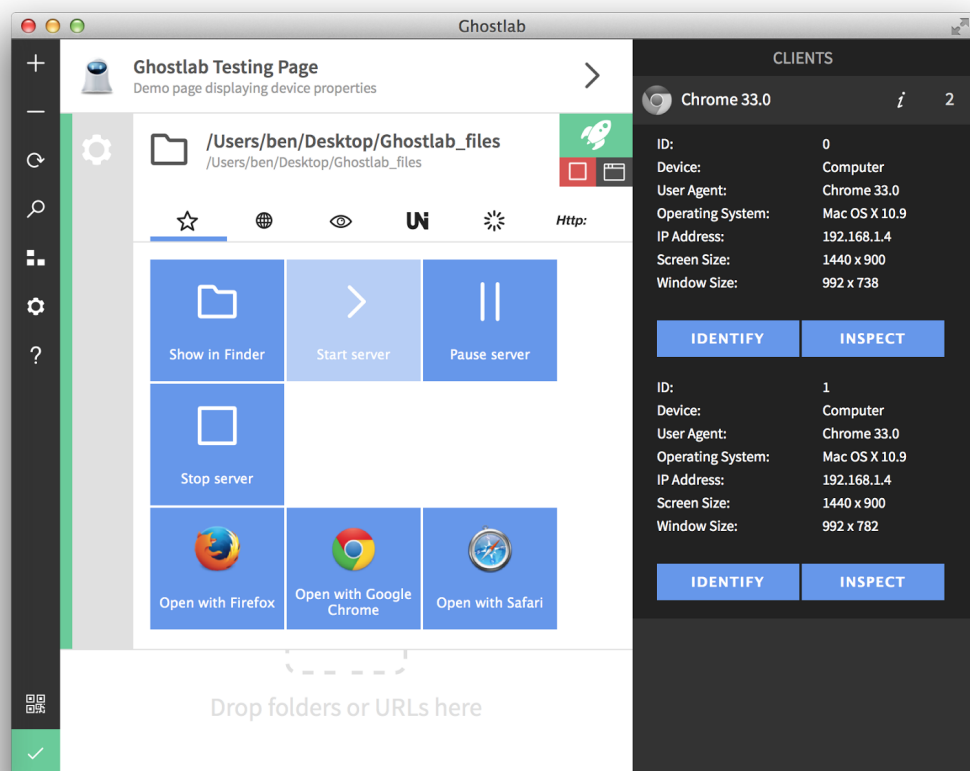


Obviously there can be a lot more to it than this, feel free to have a play or ask questions if you need to do anything more technical. Just be sure to leave it in a functional state for the next user.

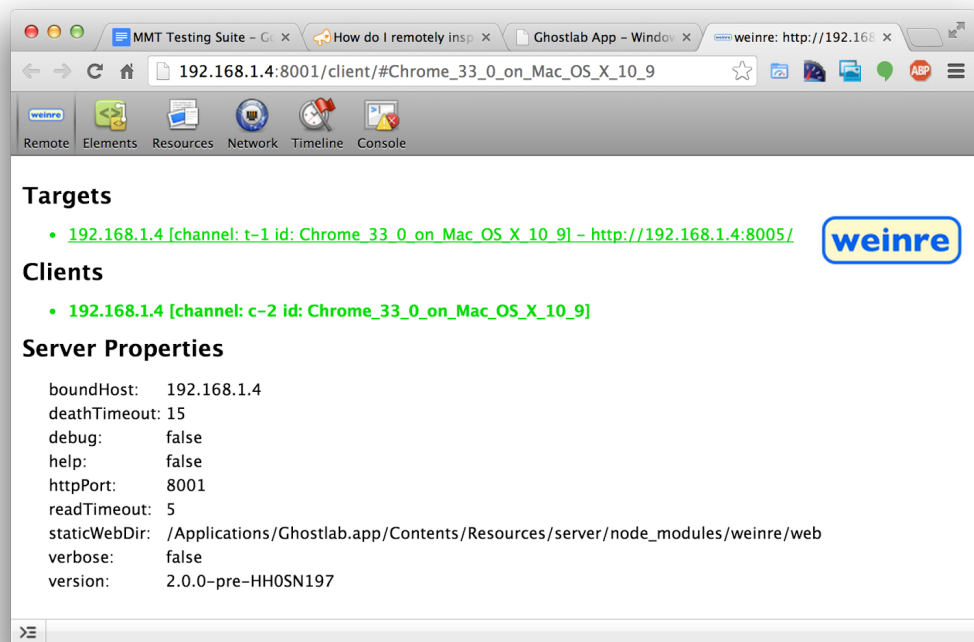
Inspecting Code Structure:

You can inspect/highlight the structure of each device, simply:

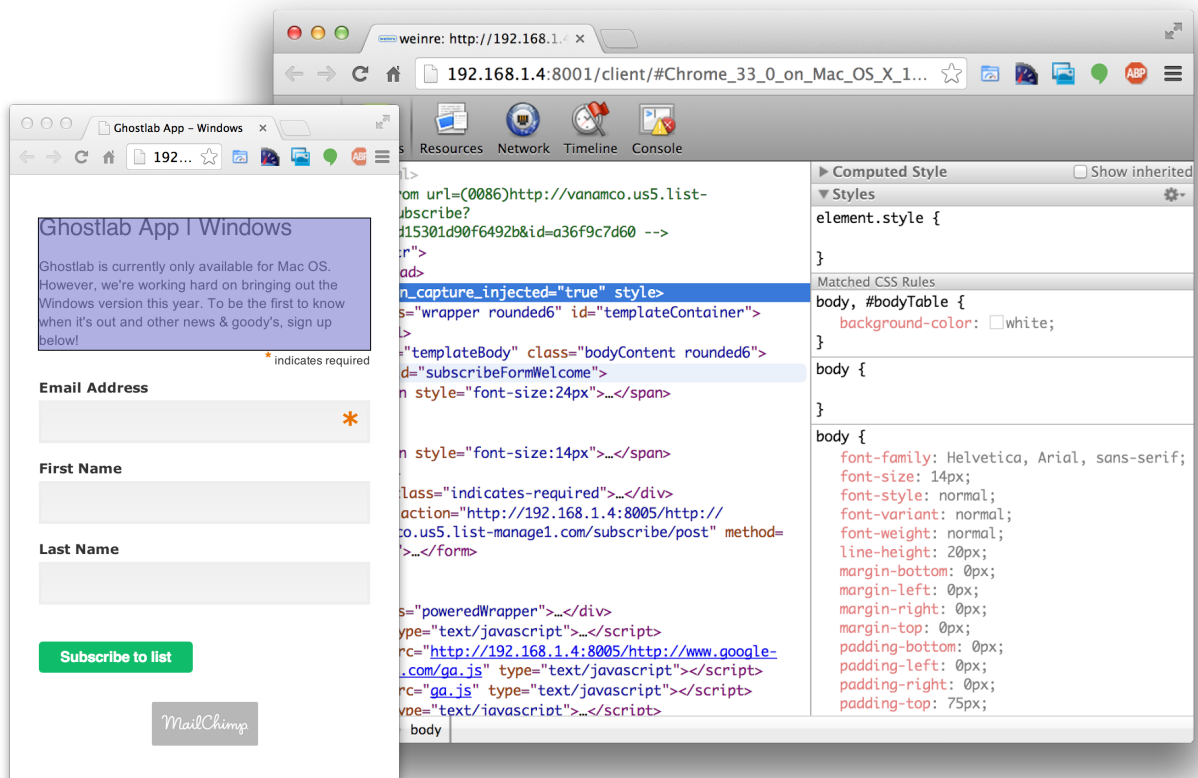
1. With an active running server select the 'i' icon and choose 'inspect.'



2. Select the target, in this case Chrome 33, it should just highlight



- Next select 'Elements' and an inspector should appear (similar to those in Chrome), element highlighting and modifying should then be possible on the remote device.



Who can use it?

If you can launch a browser and enter a URL you have 90% of the skills required to use the lab.... In all seriousness if you find yourself testing maybe more than a couple of browsers the testing suite could save you lot of time. At the moment its not restricted and you can simply walk up to the batcave and give

it a go. In future if we find there are scheduling issues we may implement some sort of timetable.

Its not working?

While like many things in life the TS should be infallible, it isn't.... if you find yourself in a situation where you can't access a site to test over all the devices simultaneously there is a simple alternative. If you send an email of the URL you want to test to:

mmt.testing.suite@gmail.com

the email will be delivered to each of the devices, simply open the mail app and click the link. Much quicker than typing URLs in manually one at a time.

Of course if you need any help, feel free to ask for assistance...

Considerations

Following these few simple rules will make the whole thing more enjoyable and usable for everyone:

- If you take a device from the lab, return it and then reconnect the device properly (so its charging and the cables are neatly tucked away).
- If you change the WiFi network a device is using, put it back on to the 'testing-suite' network.
- If you spin up Internet Explorer virtual machines, shut them down once you're finished.
- Please don't customise the Mac Mini. Moving shortcuts, "updating" network settings and such will make it harder to fix if stuff goes wrong and alienate those that aren't familiar with OS X.

Questions / Ideas

The lab is still very much a work in progress, new devices will get added the software will get upgraded and things will go from strength to strength; however feel free to ask a question or put suggestions forward.

Useful Links:

1. <http://vanamco.com/ghostlab/>
2. <http://feedback.vanamco.com/knowledgebase>
3. <https://github.com/xdissent/ievms>